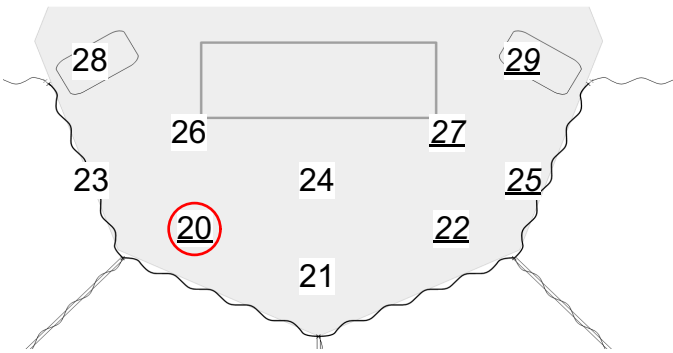
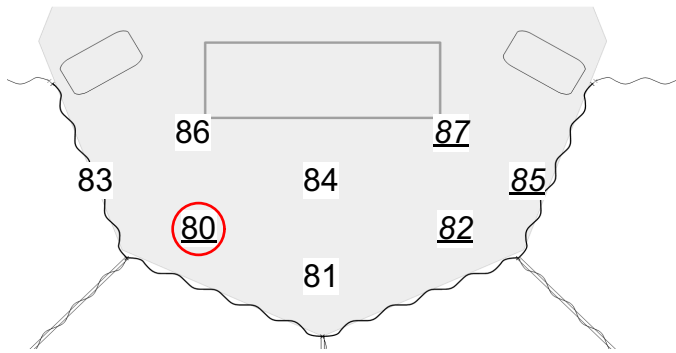


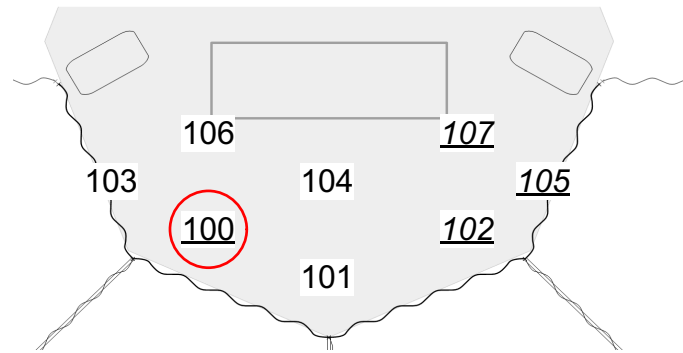
Warm Front - R02



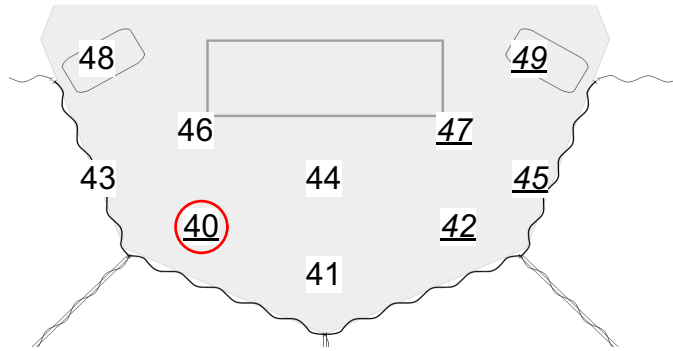
Luster II Side Light



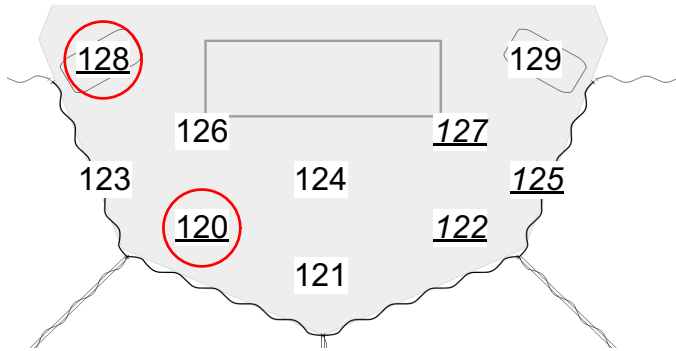
Side Texture



Cool Front - L201



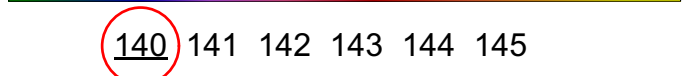
D60 Vivid Top Light



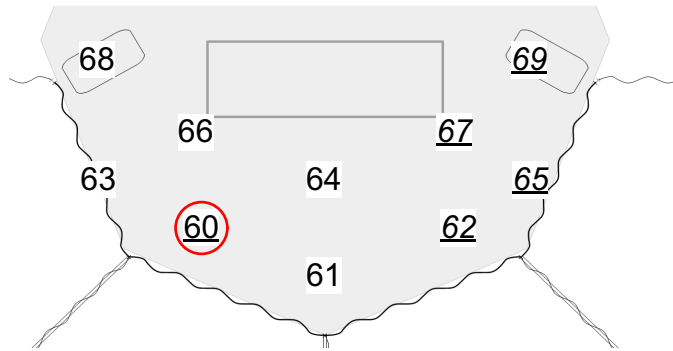
Martin 700 Profile *



Chroma Q Wall Lights



Front Texture - R51

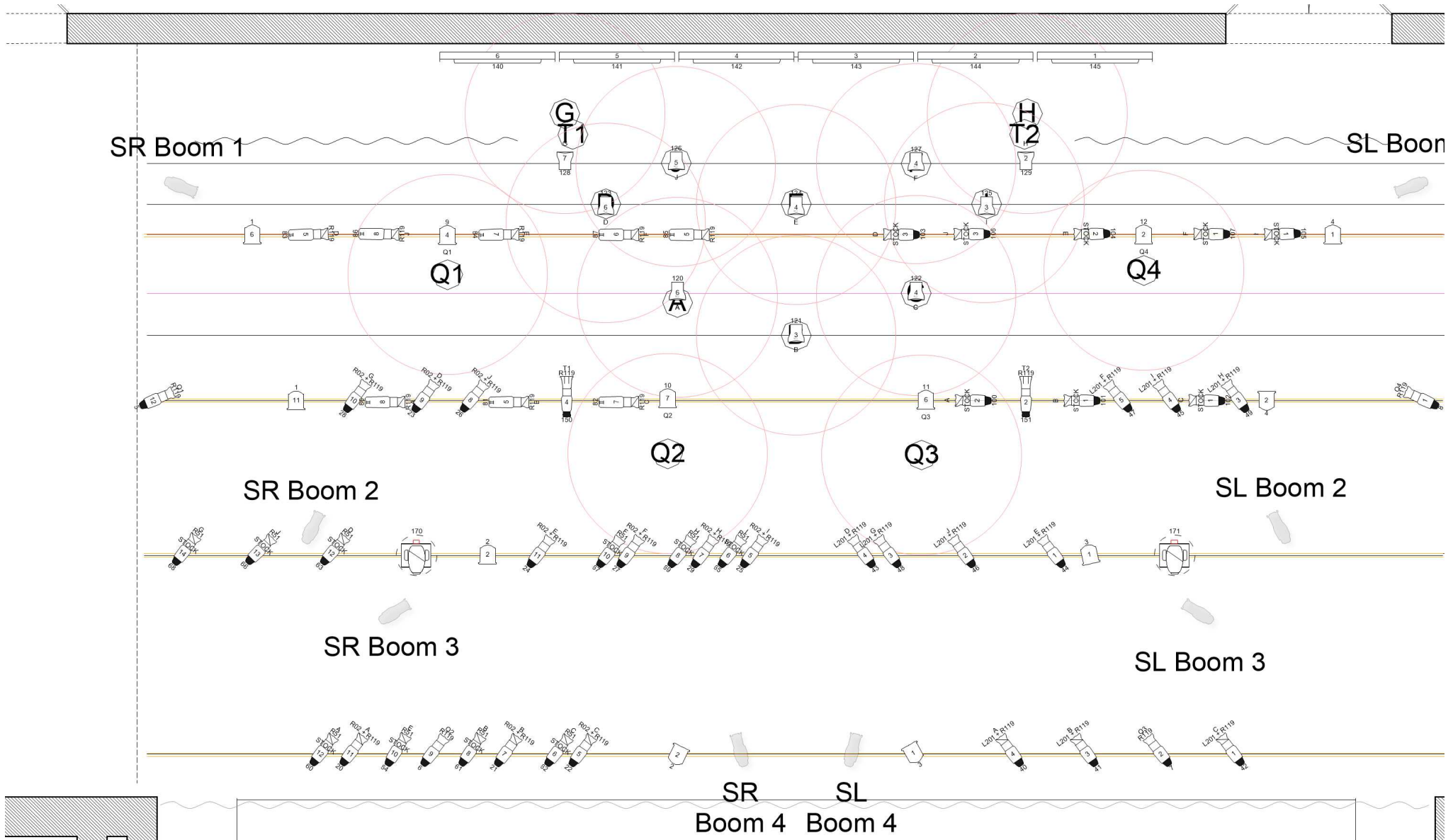


House Lights			
1	2	3	4
Front Quadrant Lights			
5	6	7	8
Down Quadrant Lights			
9	10	11	12
Tech Table Specials			
150	151		



Mutual Aid: The Musical Magic Sheet

Lighting Designer: Sam Powers
Production Electrician: Paul Thesien



Mutual Aid: The Musical Channel Hookup						
Channel	Position	Unit Number	Instrument Type	Purpose	Color	Gobo 1
1	4th Electric	6	Altman 8in Fresnel	House Light	-	-
1	3rd Electric	11	Altman 8in Fresnel	House Light	-	-
2	1b Electric	2	Altman 8in Fresnel	House Light	-	-
2	1a Electric	2	Altman 8in Fresnel	House Light	-	-
3	1b Electric	1	Altman 8in Fresnel	House Light	-	-
3	1a Electric	1	Altman 8in Fresnel	House Light	-	-
4	4th Electric	1	Altman 8in Fresnel	House Light	-	-
4	3rd Electric	2	Altman 8in Fresnel	House Light	-	-
5	3rd Electric	12	ETC Source4 36deg 750W	Quad Front	R119	-
6	1st Electric	9	ETC Source4 36deg 750W	Quad Front	R119	-
7	1st Electric	2	ETC Source4 36deg 750W	Quad Front	R119	-
8	3rd Electric	1	ETC Source4 36deg 750W	Quad Front	R119	-
9	4th Electric	4	Altman 8in Fresnel	Area Down	-	-
10	3rd Electric	7	Altman 8in Fresnel	Area Down	-	-
11	3rd Electric	6	Altman 8in Fresnel	Area Down	-	-
12	4th Electric	2	Altman 8in Fresnel	Area Down	-	-
20	1st Electric	11	ETC Source4 26deg 750W	Warm Front Light	R02 + R119	-
21	1st Electric	7	ETC Source4 26deg 750W	Warm Front Light	R02 + R119	-
22	2nd Electric	5	ETC Source4 26deg 750W	Warm Front Light	R02 + R119	-
23	3rd Electric	9	ETC Source4 36deg 750W	Warm Front Light	R02 + R119	-
24	2nd Electric	11	ETC Source4 36deg 750W	Warm Front Light	R02 + R119	-
25	2nd Electric	5	ETC Source4 36deg 750W	Warm Front Light	R02 + R119	-
26	3rd Electric	8	ETC Source4 36deg 750W	Warm Front Light	R02 + R119	-
27	2nd Electric	9	ETC Source4 36deg 750W	Warm Front Light	R02 + R119	-
28	3rd Electric	10	ETC Source4 36deg 750W	Warm Front Light	R02 + R119	-
29	2nd Electric	7	ETC Source4 36deg 750W	Warm Front Light	R02 + R119	-
40	1st Electric	4	ETC Source4 26deg 750W	Cool Front Light	L201 + R119	-
41	1st Electric	3	ETC Source4 26deg 750W	Cool Front Light	L201 + R119	-
42	1st Electric	1	ETC Source4 26deg 750W	Cool Front Light	L201 + R119	-
43	2nd Electric	4	ETC Source4 36deg 750W	Cool Front Light	L201 + R119	-
44	2nd Electric	1	ETC Source4 36deg 750W	Cool Front Light	L201 + R119	-
45	3rd Electric	4	ETC Source4 36deg 750W	Cool Front Light	L201 + R119	-
46	2nd Electric	2	ETC Source4 36deg 750W	Cool Front Light	L201 + R119	-
47	3rd Electric	5	ETC Source4 36deg 750W	Cool Front Light	L201 + R119	-
48	2nd Electric	3	ETC Source4 36deg 750W	Cool Front Light	L201 + R119	-
49	3rd Electric	3	ETC Source4 36deg 750W	Cool Front Light	L201 + R119	-
60	1st Electric	12	ETC Source4 26deg 750W	Front Texture	R51	STOCK
61	1st Electric	8	ETC Source4 26deg 750W	Front Texture	R51	STOCK
62	1st Electric	6	ETC Source4 26deg 750W	Front Texture	R51	STOCK
63	2nd Electric	12	ETC Source4 26deg 750W	Front Texture	R51	STOCK
64	1st Electric	10	ETC Source4 26deg 750W	Front Texture	R51	STOCK
65	2nd Electric	6	ETC Source4 36deg 750W	Front Texture	R51	STOCK
66	2nd Electric	13	ETC Source4 26deg 750W	Front Texture	R51	STOCK
67	2nd Electric	10	ETC Source4 36deg 750W	Front Texture	R51	STOCK
68	2nd Electric	14	ETC Source4 26deg 750W	Front Texture	R51	STOCK
69	2nd Electric	8	ETC Source4 36deg 750W	Front Texture	R51	STOCK
80	3b Electric	8	ETC Source4 LED2LS 26deg	High Side	R119	-
81	3a Electric	5	ETC Source4 LED2LS 26deg	High Side	R119	-
82	3b Electric	7	ETC Source4 LED2LS 26deg	High Side	R119	-
83	4th Electric	5	ETC Source4 LED2LS 26deg	High Side	R119	-
84	4a Electric	7	ETC Source4 LED2LS 26deg	High Side	R119	-

Mutual Aid: The Musical Channel Hookup						
Channel	Position	Unit Number	Instrument Type	Purpose	Color	Gobo 1
85	4a Electric	5	ETC Source4 LED2LS 26deg	High Side	R119	-
86	4b Electric	8	ETC Source4 LED2LS 26deg	High Side	R119	-
87	4b Electric	6	ETC Source4 LED2LS 26deg	High Side	R119	-
100	3b Electric	2	ETC Source4 26deg 750W	High Side Texture	-	STOCK
101	3a Electric	1	ETC Source4 26deg 750W	High Side Texture	-	STOCK
102	3b Electric	1	ETC Source4 26deg 750W	High Side Texture	-	STOCK
103	4th Electric	3	ETC Source4 26deg 750W	High Side Texture	-	STOCK
104	4a Electric	2	ETC Source4 26deg 750W	High Side Texture	-	STOCK
105	4a Electric	1	ETC Source4 26deg 750W	High Side Texture	-	STOCK
106	4b Electric	3	ETC Source4 26deg 750W	High Side Texture	-	STOCK
107	4b Electric	1	ETC Source4 26deg 750W	High Side Texture	-	STOCK
120	3b Electric	6	ETC D60 Lustr SELL40	Top Light	-	-
121	3a Electric	3	ETC D60 Lustr SELL40	Top Light	-	-
122	3b Electric	4	ETC D60 Lustr SELL40	Top Light	-	-
123	4a Electric	6	ETC D60 Lustr SELL40	Top Light	-	-
124	4a Electric	4	ETC D60 Lustr SELL40	Top Light	-	-
125	4a Electric	3	ETC D60 Lustr SELL40	Top Light	-	-
126	4b Electric	5	ETC D60 Lustr SELL40	Top Light	-	-
127	4b Electric	4	ETC D60 Lustr SELL40	Top Light	-	-
128	4b Electric	7	ETC D60 Lustr SELL40	Top Light	-	-
129	4b Electric	2	ETC D60 Lustr SELL40	Top Light	-	-
140	Ground Row	6	ChromaQ Colorforce II 72	Wall Lighting	-	-
141	Ground Row	5	ChromaQ Colorforce II 72	Wall Lighting	-	-
142	Ground Row	4	ChromaQ Colorforce II 72	Wall Lighting	-	-
143	Ground Row	3	ChromaQ Colorforce II 72	Wall Lighting	-	-
144	Ground Row	2	ChromaQ Colorforce II 72	Wall Lighting	-	-
145	Ground Row	1	ChromaQ Colorforce II 72	Wall Lighting	-	-
150	3a Electric	4	ETC Source4 14deg 750W	Tech Table Specials	R119	-
151	3a Electric	2	ETC Source4 14deg 750W	Tech Table Specials	R119	-
170	2nd Electric	-	Martin MAC 700 Profile	Fill + Effects	-	-
171	2nd Electric	-	Martin MAC 700 Profile	Fill + Effects	-	-
N/A	SR Boom 1	1	ETC Source4 36deg 750W	Actor Controlled	R02 + L201	-
N/A	SR Boom 2	1	ETC Source4 36deg 750W	Actor Controlled	R02 + L201	-
N/A	SR Boom 3	1	ETC Source4 36deg 750W	Actor Controlled	R02 + L201	-
N/A	SR Boom 4	1	ETC Source4 36deg 750W	Actor Controlled	R02 + L201	-
N/A	SL Boom 1	1	ETC Source4 36deg 750W	Actor Controlled	R02 + L201	-
N/A	SL Boom 2	1	ETC Source4 36deg 750W	Actor Controlled	R02 + L201	-
N/A	SL Boom 3	1	ETC Source4 36deg 750W	Actor Controlled	R02 + L201	-
N/A	SL Boom 4	1	ETC Source4 36deg 750W	Actor Controlled	R02 + L201	-